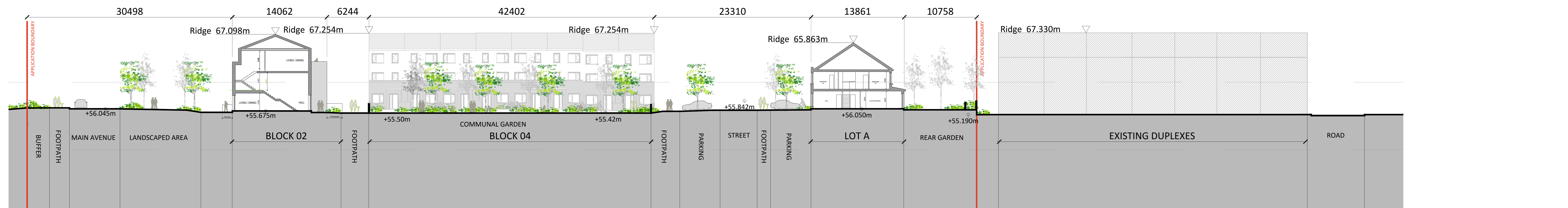




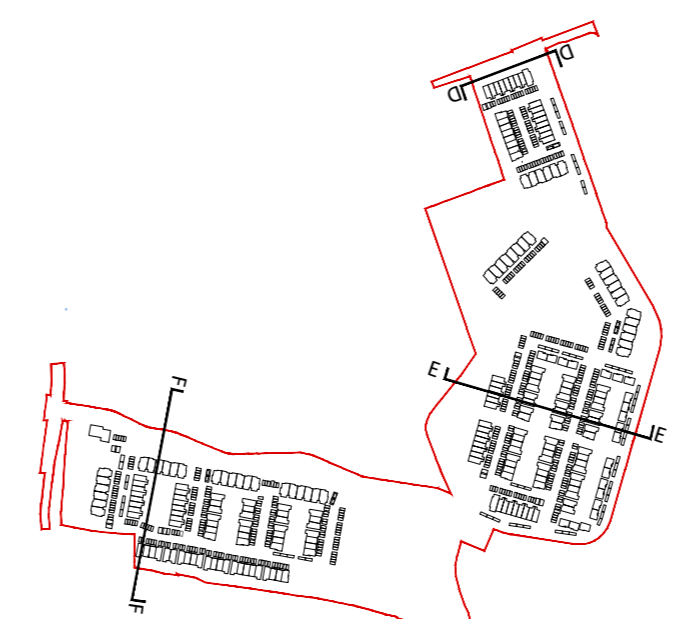
PROPOSED STREET ELEVATION - DUBLIN ROAD
SECTION D-D: 1:200



SECTION E-E: 1:200



SECTION F-F: 1:200



Revision Description	Date	Rev. No.	Issued by

o'mahony pike

Project No.: 20007 Scale @ A0: 1:200
 Project Lead: DMcD Date Printed: 10-06-2022
 Drawn By: JK Current Rev.: P02
 Model No.: 20007-OMP-00-ZZ-M2-A-2004
 Purpose: Planning

Project: Ballyouister SHD (Phase 1)
 Location: Ballyouister, Celbridge, Co. Kildare
 Client: Kieran Curtin, Receiver over certain assets of Maplewood Developments Unlimited Company (in liquidation and in receivership)

Drawing Title: Contextual Sections and Elevations_Sheet 03
 Drawing No.: 20007-OMP-00-ZZ-DR-A-2003

Any reference to fire safety design or performance is presented for coordination purposes only. Refer only to the granted Fire Safety Certificate, and fire consultant's information for fire safety design, specification and performance.
 Figured dimensions only to be used. This drawing is copyright of O'Mahony Pike Architects Ltd. All information is shared as per approved use in accordance with BS1192(2007) + A2(2016), Table 5; Standard Codes for Suitability of Models and Documents.
 If 'Information Approval Check' is empty, this information has been shared at 50 - WIP.